

MAN 51/60



Bore 510 mm, Stroke 600 mm		6L	9V	12V	18V
Engine speed	rpm	500/514	500/514	500/514	500/514
Engine Power	kW	6,300	9,450	12,600	18,900
Frequency	Hz	50/60	50/60	50/60	50/60
Electr. Genset power	kW	6,130	9,190	12,310	18,465

Electr. Genset Heat Rate at 100% load

Liquid fuel (WB2007/2008)	kJ/kWh	7,602	7,602	7,543	7,528
---------------------------	--------	-------	-------	-------	-------

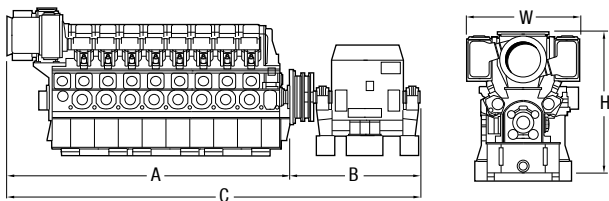
Lube Oil Consumption	kg/h	2.5	3.8	5.0	7.6
----------------------	------	-----	-----	-----	-----

Dimensions

A	mm	8,464	11,067	9,970	13,489
B	mm	4,665	4,950	4,950	5,410
C	mm	13,129	16,017	14,920	18,899
W	mm	3,156	3,251	4,884	4,884
H	mm	5,807	5,807	6,450	6,450
Genset dry mass	t	180	225	276	381

Weights and dimensions are subject to final application

The 51/60 liquid fuel engine is especially designed for a later upgrade to a 51/60DF dual fuel engine or 51/60G gas engine. Therefore this engine is designated for power plants running initially on liquid fuel only, before gas is available. The engine is optimized for pure liquid fuel operation which leads to a significant reduction in SFOC compared to the 51/60DF in liquid mode.





MAN 51/60

Configuration: L or V-Type

Bore: 510mm

Stroke: 600 mm

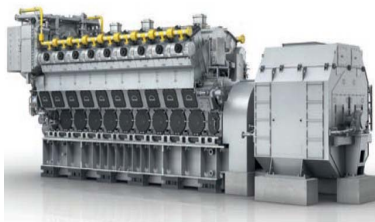
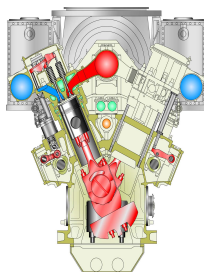
Speed: 500/514 rpm

Cylinder rating: 1,050 kW

Mean Piston speed: 10/ 10.3 m/sec

Mean eff.press.: 20.6/20.0 bar

Fuel quality: ISO RMK700



URL: <http://www.soar.hk>

E-mail: sale@soar.hk

Phone: +86-4008111308